

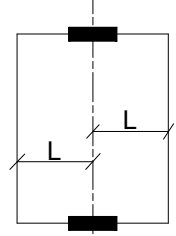
DOOR WEIGHT
max. 80 kg

FINISHING:
DEEP BLACK
OXIDATION
50 micron

DOOR HEIGHT
min. 1000 mm
max. 3000 mm

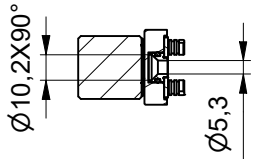
TEMP. RANGE
min. -15 °C
max. +40 °C

DOOR WIDTH
min. 500 mm
max. 800 mm
*WIDTH UP TO
1600 mm
DEPENDING AXEL
POSITION

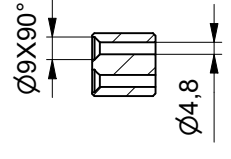


* L MAX= 800mm

SEZ. A-A

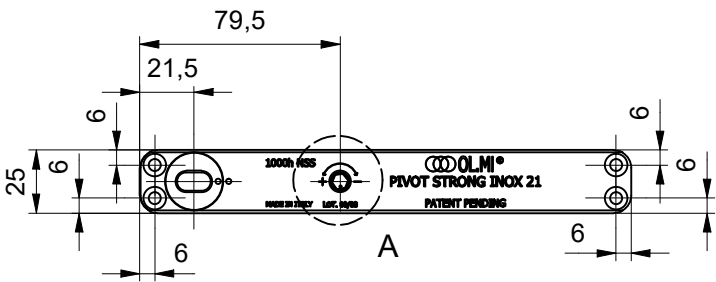
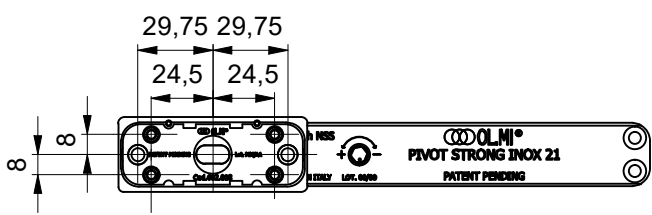
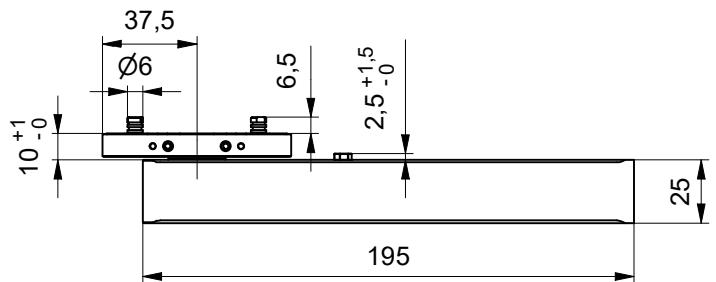
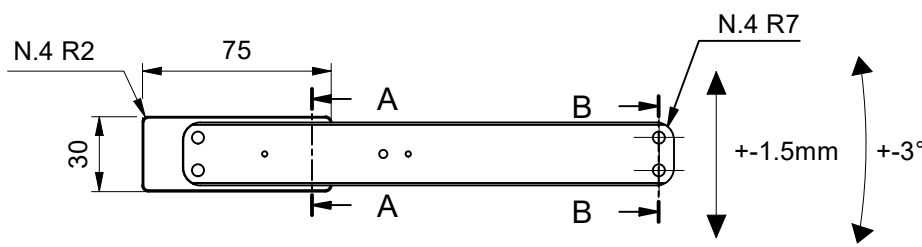


SEZ. B-B

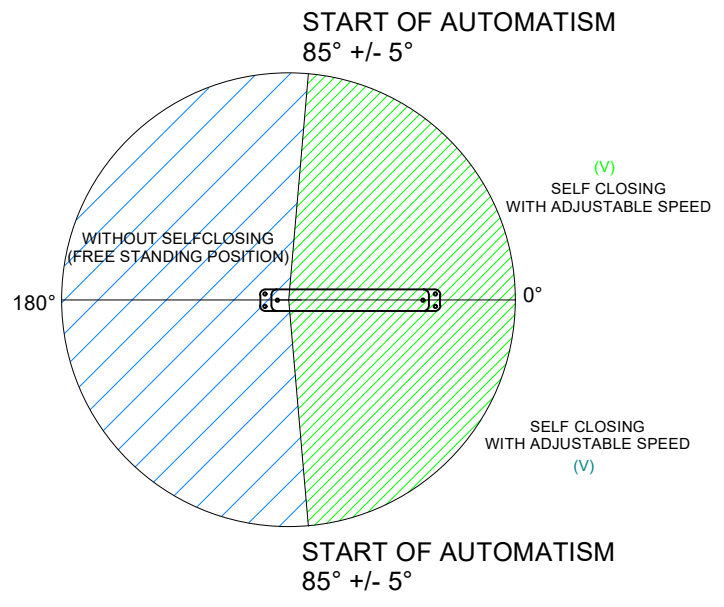
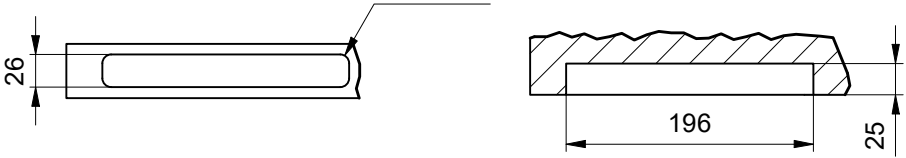


PIVOT STRONG INOX 21 - DOUBLE WAY
WITH HOLD AT 0° AND +/-90°
code:500.711-00

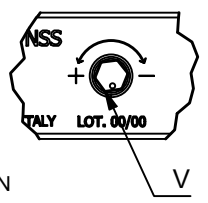
COMPOSITION		
CODE	CODE	FINAL CODE
500.695.00	602.018.00.A0	500.711.00.A0
500.695.00	602.018.00.A1	500.711.00.A1
500.695.00	602.018.00.A2	500.711.00.A2



HINGE HOUSING
N.4 R7



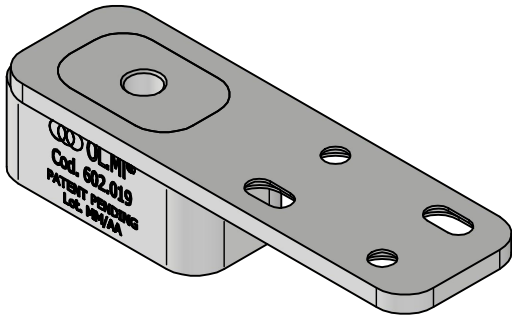
DETAIL A (2 : 3)



THE PERFORMANCES INDICATED IN THE TECHNICAL DATASHEET ARE RELATED TO A PROPERLY DONE INSTALLATION

This document is the exclusive property of OL.MI s.r.l., by law, any reproduction or disclosure to third parties is prohibited.

CODICE 602.021-00



DOOR WEIGHT

max.80 kg

FINISHING:
NATURAL OXIDATION
PLATE AND
AISI PIN

DOOR
HEIGHT

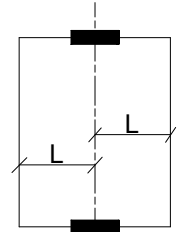
min. 1000 mm
max. 3000 mm

TEMP. RANGE

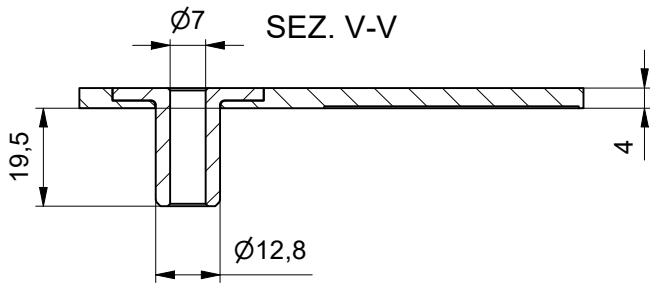
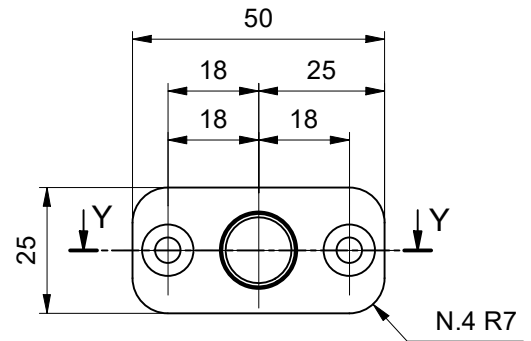
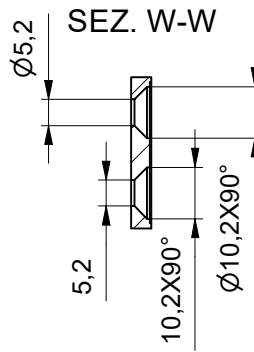
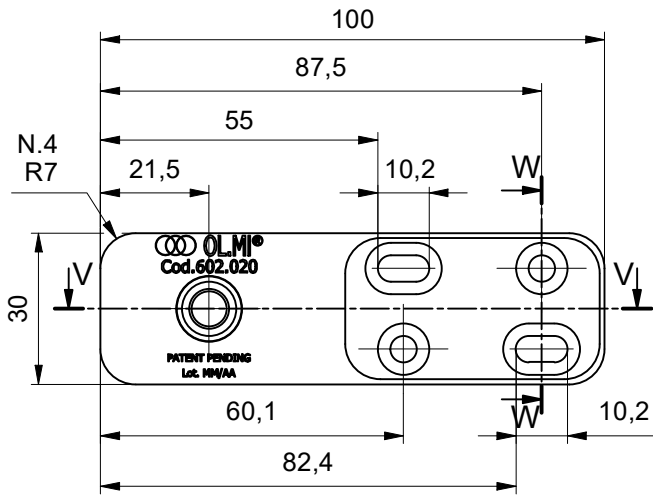
min. -15 °C
max. +40 °C

DOOR WIDTH

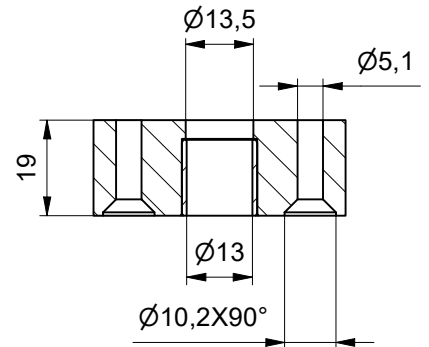
min. 500 mm
max.800 mm
*WIDTH UP TO
1600 mm
DEPENDING AXEL
POSITION



L MAX= 800mm



SEZ. Y-Y



TOP FITTING HOUSING

SEZ. AB-AB

