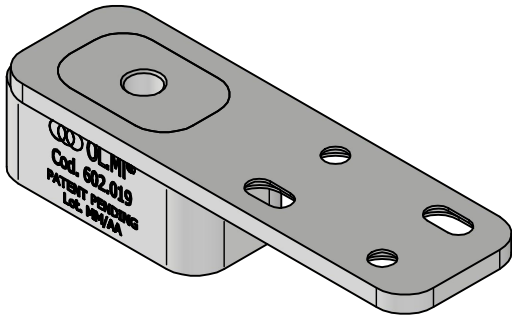


CODICE 602.021-00



MASSA PORTA
80 kg - MAX

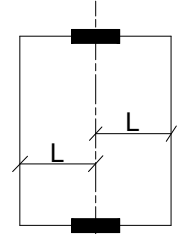
FINITURA
PIASTRINA
OSSIDATA NATURALE
PIN ACCIAIO INOX

ALTEZZA
PORTA
min 1000 mm
MAX 3000 mm

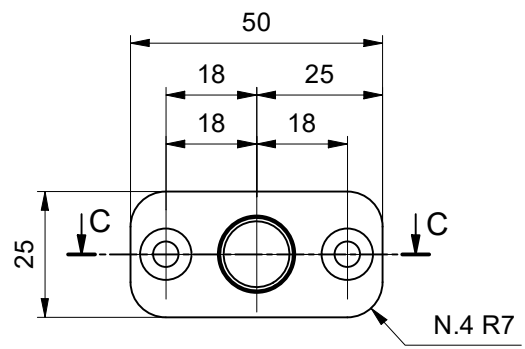
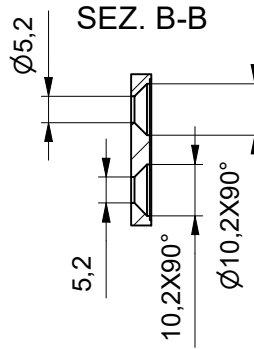
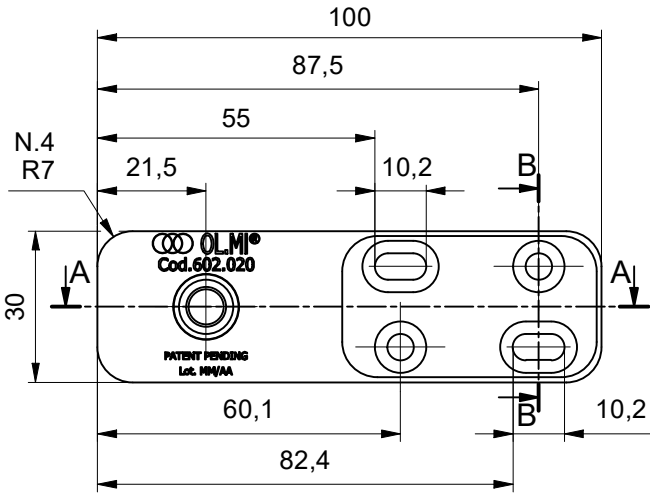
INTERVALLO
UTILIZZO
min. -15 °C
MAX +40 °C

LARGHEZZA
PORTA
min 500 mm
MAX 800 mm

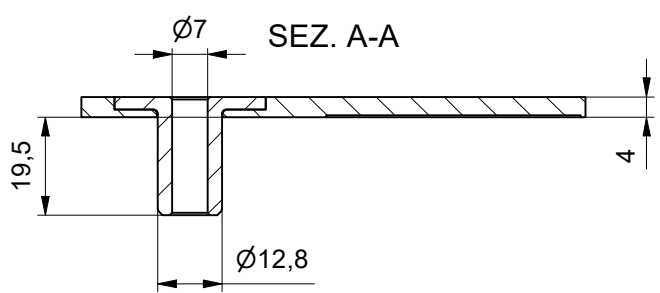
* PORTA FINO A 1600 mm
IN BASE ALLA POSIZIONE
DELL'ASSE



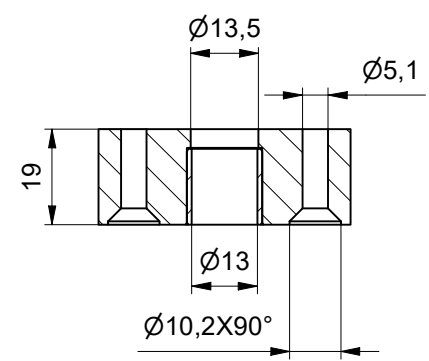
L MAX= 800mm



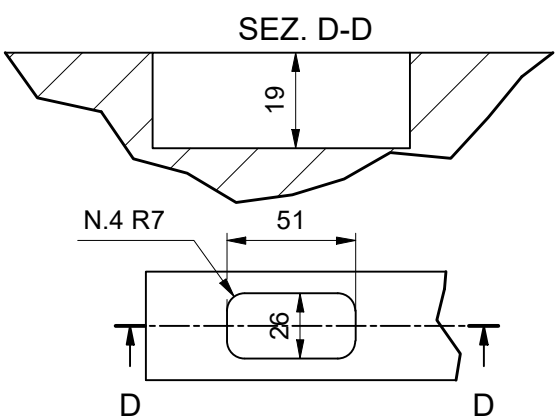
SEZ. C-C



SEZ. A-A



LAVORAZIONE PORTA



SEZ. D-D

