



SELF-CLOSING

HYDRAULIC COMMERCIAL

REFRIGERATORS HINGES.



OL.MI

40 YEARS OF EXPERIENCE TO ANTICIPATE THE BEST TECHNOLOGICAL SOLUTIONS AND MEET THE NEEDS OF OUR PARTNERS.

100% Made in Italy.

PASSION AND PROFESSIONALISM.

SPEED, RELIABILITY, STANDARDISED PROCESSES AND ATTENTION TO DETAIL.

Precision machining and chip removal after turning and milling.

State-of-the-art unmanned machines.

Raw materials certified to the highest standards.



Italian craftsmanship meets technological innovation.

INVISIBLE TECHNOLOGY, DESIGN TAKES CENTER STAGE.

Since 1980, we have been designing **hydraulic closing systems and precision mechanical components**. Our evolution has led us to expand our expertise towards **solutions that combine industrial reliability with refined aesthetics**.

Our goal? Creating **durable products that stand the test of time**, characterized by a design so minimal that it becomes almost invisible. For us, technical perfection is what you cannot see, but perceive in every detail.

Hydraulic solutions for commercial refrigeration.

BETTER REFRIGERATION.

MAXIMUM CONTROL.

ENERGY EFFICIENCY.

HYDRAULIC HINGES FOR A SECURE AND CONTROLLED CLOSURE: A COMPLETE RANGE.

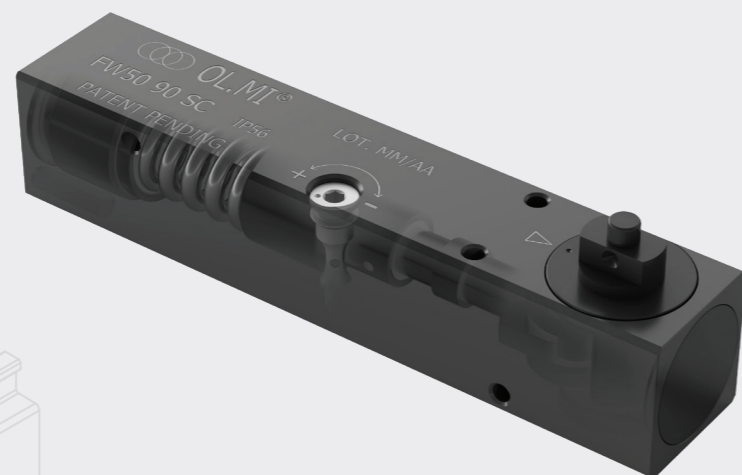
Hinges for positive and negative refrigerated counters.
Suitable for vertical, swinging and inclined doors.

FW50 90 SC INOX

Premium hydraulic hinge covered by international patents.

FOR POSITIVE AND NEGATIVE VERTICAL SWINGING DOORS.
CUSTOMISABLE.

- Can be mounted in the frame or door profile facing upwards or downwards.
- Adjustable closing speed.
- Double-sided hinge suitable for positive and negative doors.
- Integrated soft close system approx. 10°/0°.
- Automatic closing approx. 85° /0°.
- Nozzle anti-unscrewing system.
- Watertight; certified IP 56.
- Functionality tested after 1000 h in NSS – ASTM B117 standard.
- Material conforms with 02/95/EC; RoHS II.



Eliminate Materials of Concern (MOCs): Mercury, Lead, Cadmium, Chromium (VI), Chlorinated solvents, and Brominated flame-retardants.

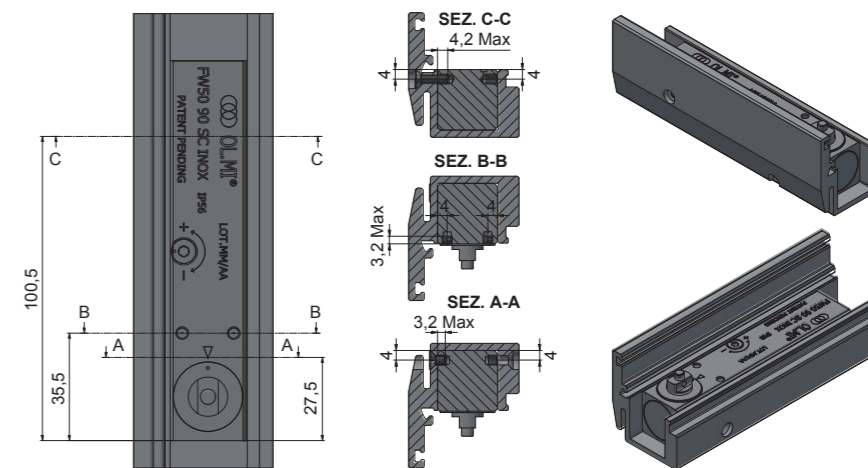
General standards: 02/95/EC; RoHS II.

Robustness: 700.000 cycles

Warranty: 2 years from the delivery date.

For the hinge warranty it is essential to use only original OL.MI's adapters. In all the other cases the warranty expires.

Certified watertight hinge	IP56 grade of protection according to the EN 60529 It can be installed in humid environments.			
Applications	Commercial refrigerator			
Door width	Maximum axis deviation 20 mm			
520 mm				
620 mm				
720 mm				
820 mm				
Max Weight	20 kg	30 kg	35 kg	40 kg
Manual opening	From 0° to 175° ±5°			
Manual closing	From 175° ±5° to 85° ±5°			
Automatic closing	It starts at 85° ±5° till 0°			
Closing speed	Adjustable, based on door's width and weight, through the rotation of a nozzle with unscrew protection			
Pre-Adjusted closing speed (in OL.MI)	5sec (+/- 1sec) from 80° to 0° at 10mm axis deviation and 10°C hinge temperature			
Integrated soft close function	From approx. 10° to 0°			
Right or Left, positive and low temp. door	By the same hinge			
Corrosion test	Functionality tested after 1000h in NSS according to ASTM B117 Standard			



ANTISLAMM 23 R/L

Hydraulic hinge covered by international patents.

LONGEVITY: UP TO 500,000 CYCLES.
TOTAL CONTROL OF THE DOOR DURING OPENING AND CLOSURE.

- Manual door opening from approx. 0°/105° with adjustable anti-slam functionality via rotation of an independent nozzle.
- Door stop on opening active from approx. 95° ±5°.
- Automatic closure approx. 95°/0°.
- Adjustable closing speed with anti-slam functionality via independent nozzle rotation.
- Preset closing speed in OL.MI: 5 sec (+/-1 sec) 80°/0°. Axis deviation of 10 mm. Estimated hinge temperature of 10° C.
- Can be mounted in the frame or door profile facing upwards or downwards.
- High functionality tested after 1000 h in NSS – ASTM B117 standard.

Eliminated Materials of Concerns (MOCs):

Mercury, Lead Cadmium, Chromium (VI), Chlorinated solvents and Brominated flame-retardants.

General Standards: 02/95/EC; RoHS II

Robustness: 500.000 cycles

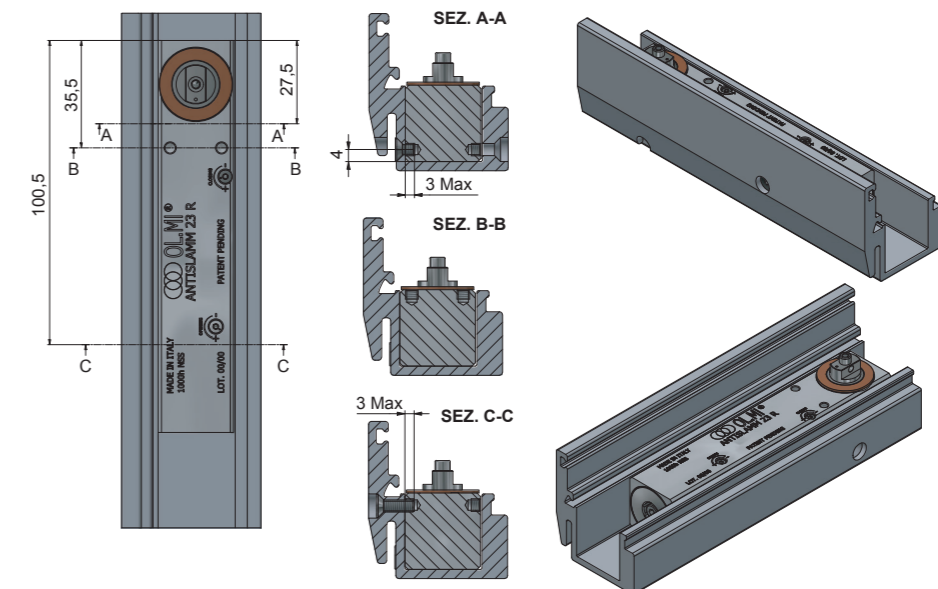
Warranty: 2 years from delivery date

The hinge is interchangeable with all previous OL.MI® versions, giving the same dimensions (25x25) and the same fixing points. For the hinge warranty it is essential to use only original OL.MI®'s adapters. In all the other cases the warranty expires. It is advisable to use an external door stop at the maximum opening of 105°. Furthermore, violent openings, collisions or forcing against the door stop function at 105°, could damage the hinges. The guarantee will not be valid in these cases.



ANTISLAMM 23 R/L

Applications	Commercial refrigerator for a total control of the door during its opening and closing			
Door width	Maximum axis deviation 10 mm on a door height 1860 mm			
520 mm	30 kg	40 kg	45 kg	50 kg
620 mm				
720 mm				
820 mm				
Max Weight	30 kg	40 kg	45 kg	50 kg
Manual opening of the door	From 0° to approx. 105° with anti-slam function adjustable by turning one independent nozzle			
Door stop function starts at approx. 95° ±5°	Blocks and holds the door open			
Automatic closing	From approx. 95° to 0°			
Closing speed	Adjustment with anti-slam function by turning one independent nozzle			
Pre-Adjust closing speed (in OL.MI)	5sec (+/-1 sec) from 80° to 0° at 10mm axis deviation and 10° hinge temperature			
RIGHT door / LEFT door	ANTISLAMM 23 R / ANTISLAMM 23 L			
Corrosion test	High functionality tested after 1000h in NSS according to ASTM B117 Standard			



FUSION RANGE FUSION

Hydraulic hinge for vertical doors.

COVERED BY INTERNATIONAL PATENTS. WITH INTEGRATED "SOFT" DOOR STOP.

- Interchangeable with all previous versions.
- Double-sided hinge suitable for positive and negative doors.
- Automatic closure approx. 85°/0°.
- Adjustable closing speed.
- Soft door stop on opening approx. 100°/105°.
- Pivot anti-extraction system.
- Nozzle anti-unscrewing system.
- Can be mounted in the frame or door profile facing upwards or downwards.
- Functionality tested after 1000 h in NSS – ASTM B117 standard.
- Material conforms with 02/95/EC; RoHS II.

Eliminated Materials of Concern (MOC):
Mercury, Lead, Cadmium, Chromium (VI),
Chlorinated solvents and Brominated
flame-retardants

General Standards: 02/95/EC; RoHS II

Robustness: 500.000 cycles

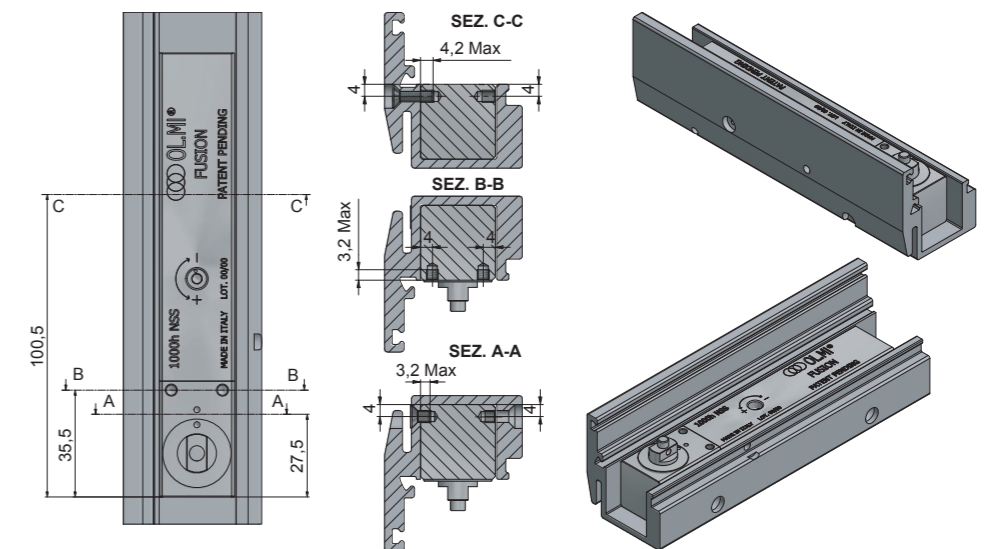
Warranty: 2 years from delivery date

For the hinge warranty it is essential to use only original OL.MI®'s adapters. In all the other cases the warranty expires. Furthermore, violent openings, collisions or forcing against the door stop function at 100°/105°, could damage the hinges. The guarantee will not be valid in these cases. To prevent collisions, it is recommended to use an external door stopper at approx. 100°



Applications	Commercial refrigerator			
Door width	Maximum axis deviation 20 mm			
520 mm	✓	✓	✓	✓
620 mm	✓	✓	✓	✓
720 mm	✓	✓	✓	✓
820 mm	✓	✓	✓	✓
Max Weight	30 kg	40 kg	45 kg	50 kg
Manual opening	From 0° to 100°/105°			
Manual closing	From 100°/105° to 85° ±5°			
Automatic closing	Starts at approx.85° ±5° until 0°			
Closing speed	Adjustable, based on door's width and weight, through the rotation of a nozzle with unscrew protection			
Pre-Adjusted closing speed (in OL.MI)	5sec (+/-1sec) from 80° to 0°at 10 mm axis deviation and 10°C hinge temperature			
"SOFT" door stop function	Starts at 100°/105°			
Resistance of the door stop function ¹	Approx.5 kg with a static pressure at 570 mm			
Integrated anti-removal pin system	Prevents pin removal in case of disassembly or replacement of doors			
Right or Left, positive or low temp. Door	By the same hinge			
Corrosion test	Functionality tested after 1000h in NSS according to ASTM B117 Standard			

¹ Functionality with the purpose of the door limit stop during its normal manual opening.



FUSION RANGE FUSION STRONG

Hydraulic hinge.

FOR LARGE VERTICAL DOORS. DOUBLE-SIDED.

- Interchangeable with all previous versions.
- Ideal for negative doors.
- Automatic closure approx. 85°/0°.
- Adjustable closing speed.
- Soft door stop on opening approx. 100°/105°.
- Pivot anti-extraction system.
- Nozzle anti-unscrewing system.
- Can be mounted in the frame or door profile facing upwards or downwards.
- Functionality tested after 1000h in NSS – ASTM B117 standard.
- Material conforms with 02/95/EC; RoHS II.

Eliminated Materials of Concern (MOC):
Mercury, Lead, Cadmium, Chromium (VI),
Chlorinated solvents and Brominated
flame-retardants

General Standards: 02/95/EC; RoHS II

Robustness: 300.000 cycles

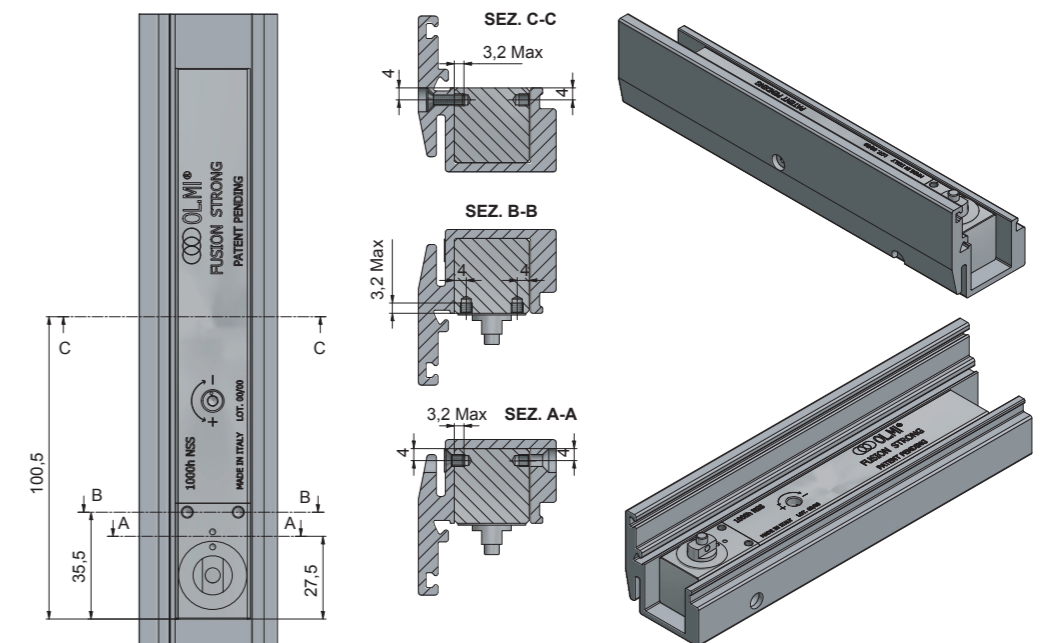
Warranty: 2 years from delivery date

For the hinge warranty it is essential to use only original OL.MI's adapters. In all the other cases the warranty expires. Furthermore, violent openings, collisions or forcing against the door stop function at 100°/105°, could damage the hinges. The guarantee will not be valid in these cases. To prevent collisions, it is recommended to use an external door stopper at approx. 100°.



Applications	Heavy doors for commercial refrigerator			
Door width	Maximum axis deviation 10 mm			
620 mm	✓	✓	✓	✓
720 mm	✓	✓	✓	✓
820 mm	✓	✓	✓	✓
920 mm	✓	✓	✓	✓
Max Weight	65 kg	70 kg	75 kg	80 kg
Manual opening	From 0° to 100°/105°			
Manual closing	From 100°/105° to 85° ±5°			
Automatic closure	Starts at approx. 85° ±5° until 0°			
Closing speed	Adjustable, based on door's width and weight, through the rotation of a nozzle with unscrew protection			
Pre-Adjusted closing speed (in OL.MI)	5sec (+/-1sec) from 80° to 0° at 10 mm axis deviation and 10°C hinge temperature			
"Soft" door stop function	Starts from 100°/105°			
Resistance of the door stop function ¹	Approx. 5 kg with a static pressure at 570 mm			
Integrated anti-removal pin system	Prevents pin removal in case of disassembly or replacement of doors			
Right or Left, positive or low temp. door	By the same hinge			
Corrosion test	Functionality tested after 1000 h in NSS according to ASTM B117 Standard			

¹ Functionality with the purpose of the door limit stop during its normal manual opening.



FUSION RANGE FUSION LIGHT S

Ultra-resistant hinge.

LONGEVITY OF UP TO 750,000 CYCLES. FOR LIGHTWEIGHT DOORS.

- Minimises resistance to door opening.
- Automatic closure approx. 85°/0°.
- Adjustable closing speed.
- Soft door stop on opening approx. 100°/105°.
- Pivot anti-extraction system.
- Nozzle anti-unscrewing system.
- Can be used for right- and left-side doors.
- Can be mounted in the frame or door profile facing upwards or downwards.
- Functionality tested after 1000 h in salt spray – ASTM B117 standard.

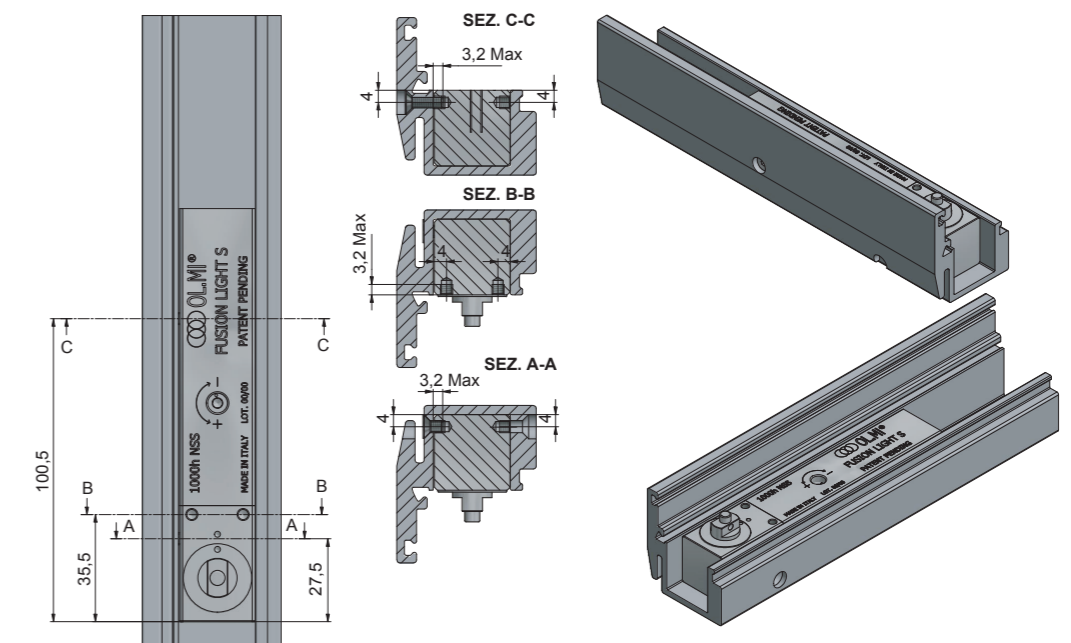
Eliminated Materials of Concern (MOC):
Mercury, Lead, Cadmium, Chromium (VI), Chlorinated solvents and Brominated flame-retardants
General Standards: 02/95/EC; RoHS II
Robustness: 750.000 cycles
Warranty: 2 years from delivery date

For the hinge warranty it is essential to use only original OL.MI®'s adapters. In all the other cases the warranty expires. Furthermore, violent openings, collisions or forcing against the door stop function at 100°/105°, could damage the hinges. The guarantee will not be valid in these cases. To prevent collisions, it is recommended to use an external door stopper at approx. 100°.



Applications	Light doors for commercial refrigeration		
Door width	Maximum axis deviation 15 mm		
520 mm			
620 mm			
720 mm			
Max Weight	10 kg	15 kg	20 kg
Manual opening	From 0° to 100°/105°		
Manual closing	From 100°/105° to 85° ±5°		
Automatic closing	Starts at approx.85° ±5° until 0°		
Closing speed	Adjustable, based on door's width and weight, through the rotation of a nozzle with unscrew protection		
Pre-Adjusted closing speed (in OL.MI)	5sec (+/-1sec) from 80° to 0°at 10 mm axis deviation and 10°C hinge temperature		
“Soft” door stop function	Starts at 100°/105°		
Resistance of the door stop function ¹	Approx.5 kg with a static pressure at 570 mm		
Integrated anti-removal pin system	Prevents pin removal in case of disassembly or replacement of doors		
Right or Left, positive or low temp. door	By the same hinge		
Corrosion test	Functionality tested after 1000h in NSS according to ASTM B117 Standard		

¹ Functionality with the purpose of the door limit stop during its normal manual opening.



16 REVERSE L/R

Reverse Left and Reverse Right.

Reverse S-12 and Reverse S-135 versions also available depending on size, weight and door inclination

**INCLINED DOORS FOR REFRIGERATORS.
LONGEVITY: UP TO 300,000 CYCLES.
FOR DOORS BETWEEN 15 AND 50 KG.**

- Positive or negative door.
- Manual opening approx. 0°/102°.
- Manual closure approx. 102°/85°. Controlled closure approx. 85°/0°.
- Closing speed adjustable depending on door width, inclination angle and weight via rotating nozzle with anti-unscrewing protection.
- Door stop on opening from approx. 102°.
- Door stop strength approx. 15 kg with static pressure at 570 mm.
- Pivot anti-extraction system.
- Integrated soft close functionality 10°/0°.
- Can be mounted in the frame or door profile facing upwards or downwards.
- Functionality tested after 1000 h in NSS – ASTM B117 standard.

Eliminated Materials of Concern (MOC):

Mercury, Lead, Cadmium, Chromium (VI), Chlorinated solvents and brominated flame-retardants
General Standards: 02/95/EC; RoHS II
Robustness: 300.000 cycles
Warranty: 2 years from delivery date

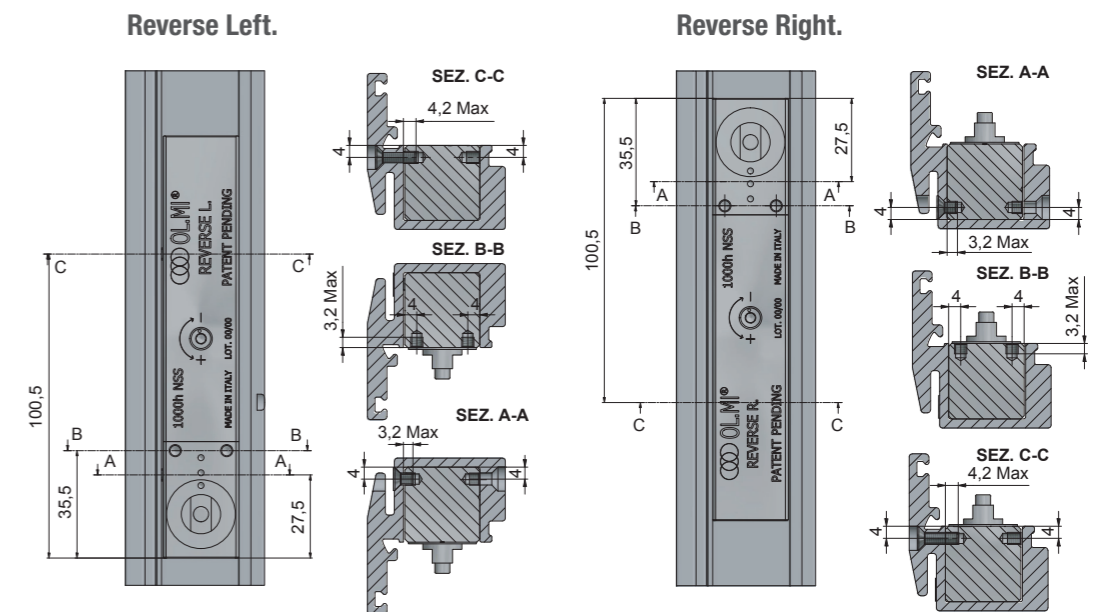
For the hinge warranty it is essential to use only original OL.MI®'s adapters. In all the other cases the warranty expires. Furthermore, violent openings, collisions or forcing against the door stop function at 102°, could damage the hinges. The guarantee will not be valid in these cases. To prevent collisions, it is recommended to use an external door stopper at approx. 100°.



Applications	Commercial refrigerator tilted door	
Estimated door width	* Estimated tilt angle min. 7° Max. 16°	
500 mm		
800 mm		
Estimated weight	Min. 15 kg	Max. 50 kg
Estimated height (mm)	Min. 1.000	Max. 2.000
Manual opening	From 0° to 102° ±5°	
Manual closing	From 102° ±5° to 85° ±5°	
Controlled closure	Starts at approx 85° ±5° until 0°	
Closing speed	Adjustable, according to the width, the angle of inclination and the weight of the door, by turning a nozzle with unscrewing protection	
Door stop function	Starts at 102° ±5°	
Resistance of the door stop function ¹	Approx.15 kg with a static pressure at 570 mm	
Integrated anti-removal pin system	Prevents pin removal in case of disassembly or replacement of doors	
Integrated "Soft" close function	From approx. 10° to 0°	
Door positive or low temp.	REVERSE L / REVERSE R	
Corrosion test	Functionality tested after 1000h in NSS according to ASTM B117 Standard	

* Indicative values. For specific dimensions (width and height), weight and tilt angle, the REVERSE closing system for tilted doors can be customized.

¹ Functionality with the purpose of the door limit stop during its normal manual opening.



Optimising the use of resources.

**USE THE BEST TECHNOLOGIES
AVAILABLE ON THE MARKET.**

GUARANTEE QUALITY AND LOW COSTS.



OL.MI Srl

+39 045 6450621 / info@olmisrl.com

Via dell'industria, 15 - Castelnuovo del Garda VR

www.olmisrl.com/en

