

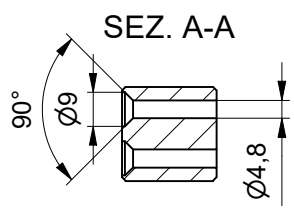
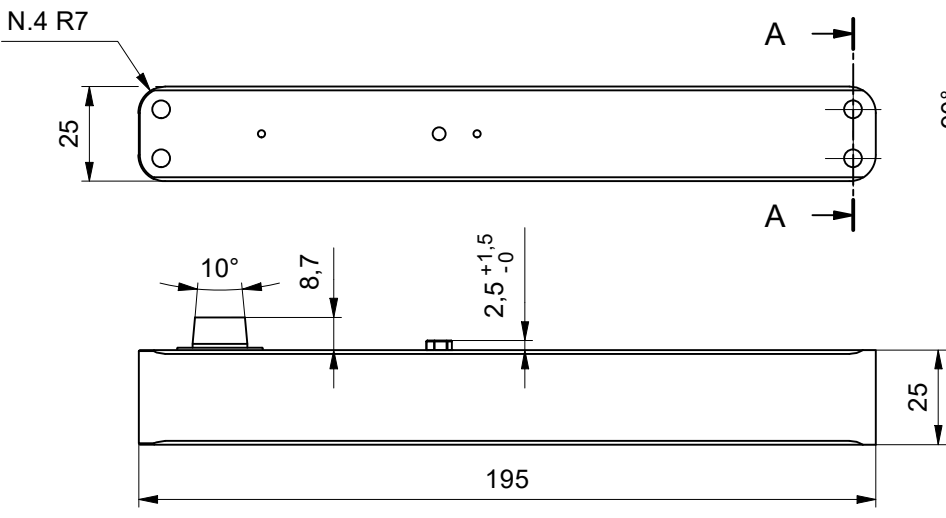
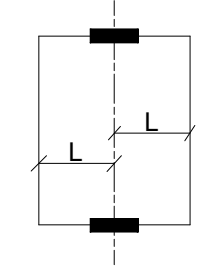
**DOOR WEIGHT**  
max. 80 kg

**FINISHING:**  
DEEP BLACK  
OXIDATION  
50 micron

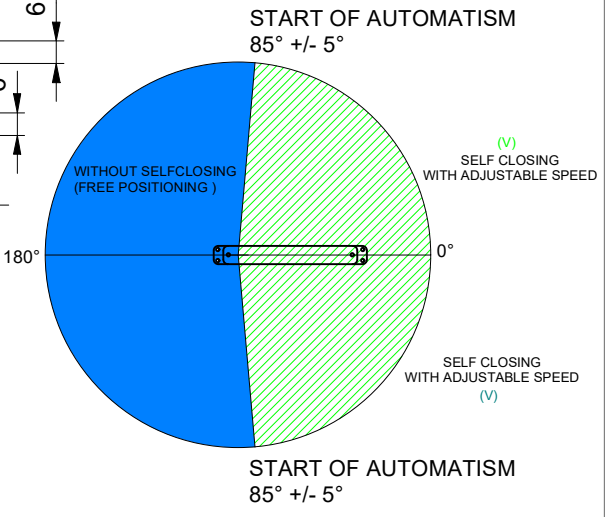
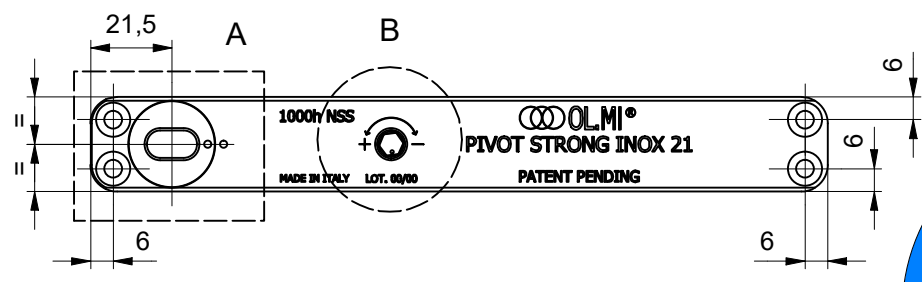
**DOOR HEIGHT**  
min. 1000 mm  
max. 3000 mm

**TEMP. RANGE**  
min. -15 °C  
max. +40 °C

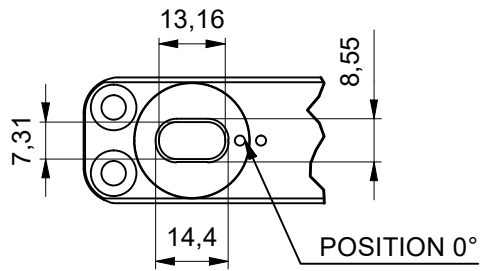
**DOOR WIDTH**  
min. 500 mm  
max. 800 mm  
\*WIDTH UP TO  
1600 mm  
DEPENDING AXEL  
POSITION



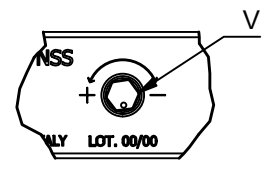
**PIVOT STRONG INOX 21  
WITH HOLD OPEN AT 90°  
code:500.695-00**



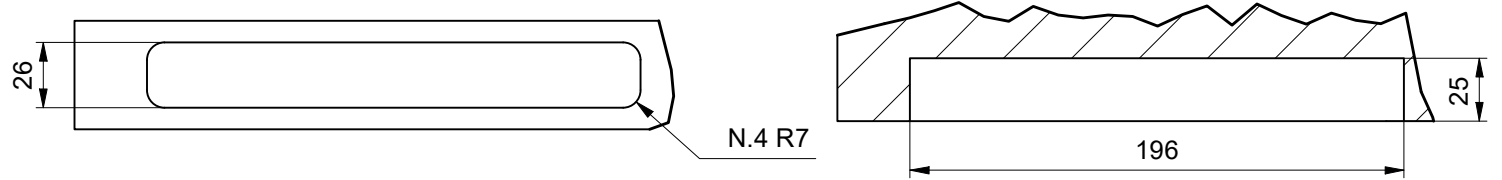
**DETAIL A (2:3)**



**DETAIL B (2:3)**



**HINGE HOUSING**



THE PERFORMANCES INDICATED IN THE TECHNICAL DATASHEET ARE RELATED TO A PROPERLY DONE INSTALLATION

This document is the exclusive property of OL.MI s.r.l., by law, any reproduction or disclosure to third parties is prohibited.