

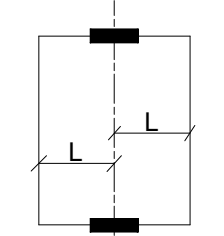
DOOR WEIGHT
max. 80 kg

FINISHING:
DEEP BLACK
OXIDATION
50 micron

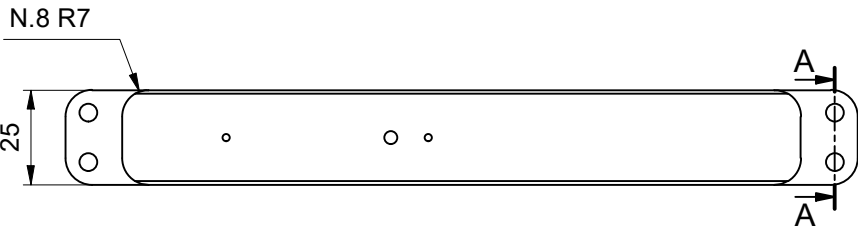
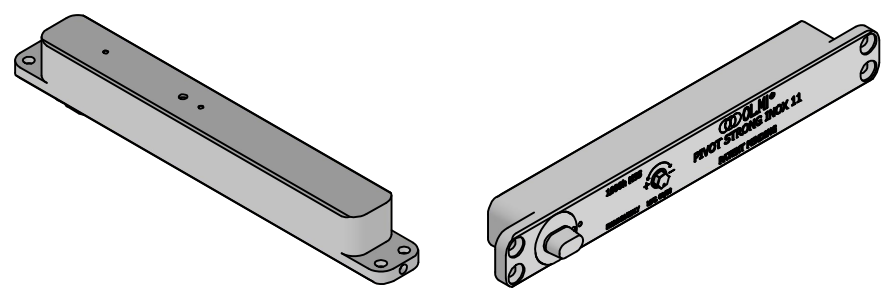
DOOR HEIGHT
min. 1000 mm
max. 3000 mm

TEMP. RANGE
min. -15 °C
max. +40 °C

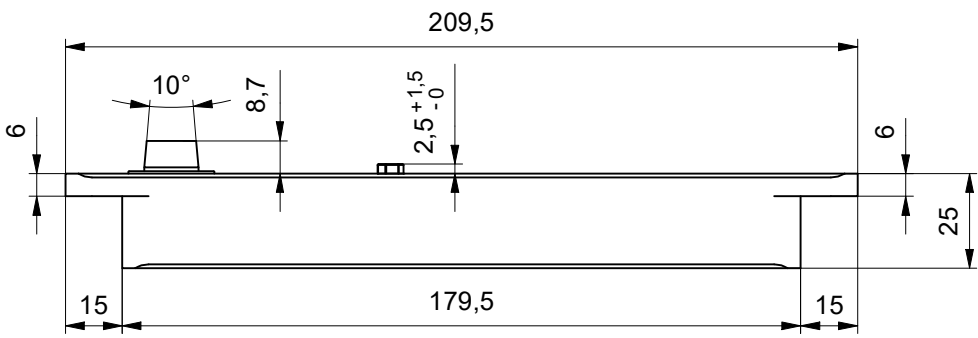
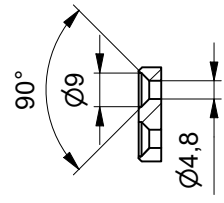
DOOR WIDTH
min. 500 mm
max. 800 mm
*WIDTH UP TO
1600 mm
DEPENDING AXEL
POSITION



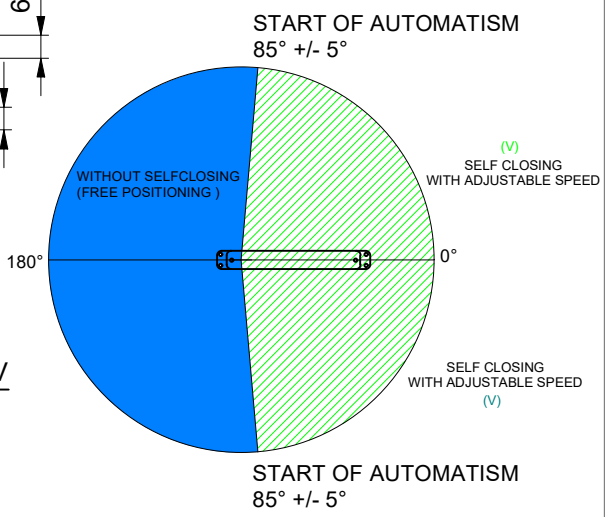
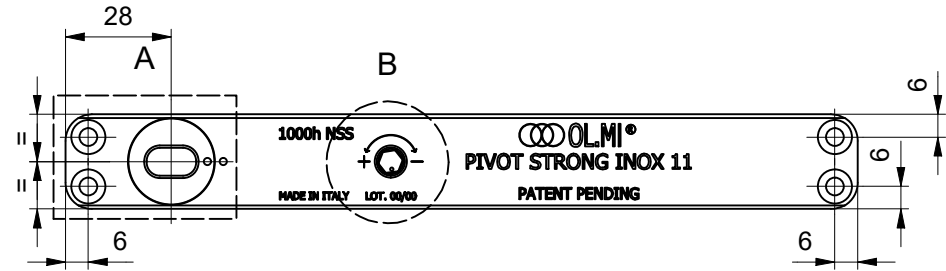
* L MAX= 800mm



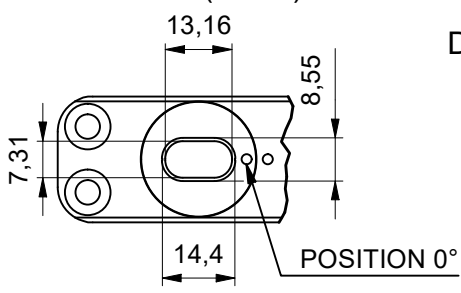
SEZ. A-A



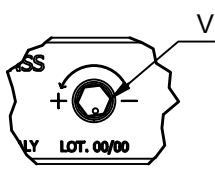
**PIVOT STRONG INOX 11
WITH HOLD OPEN AT 90°
code:500.694-00**



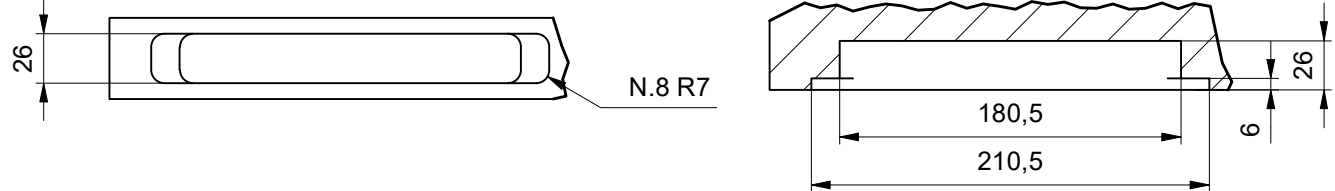
DETAIL A (2 : 3)



DETAIL B (2 : 3)



HINGE HOUSING



THE PERFORMANCES INDICATED IN THE TECHNICAL DATASHEET ARE RELATED TO A PROPERLY DONE INSTALLATION

This document is the exclusive property of OL.MI s.r.l. , by law, any reproduction or disclosure to third parties is prohibited.